

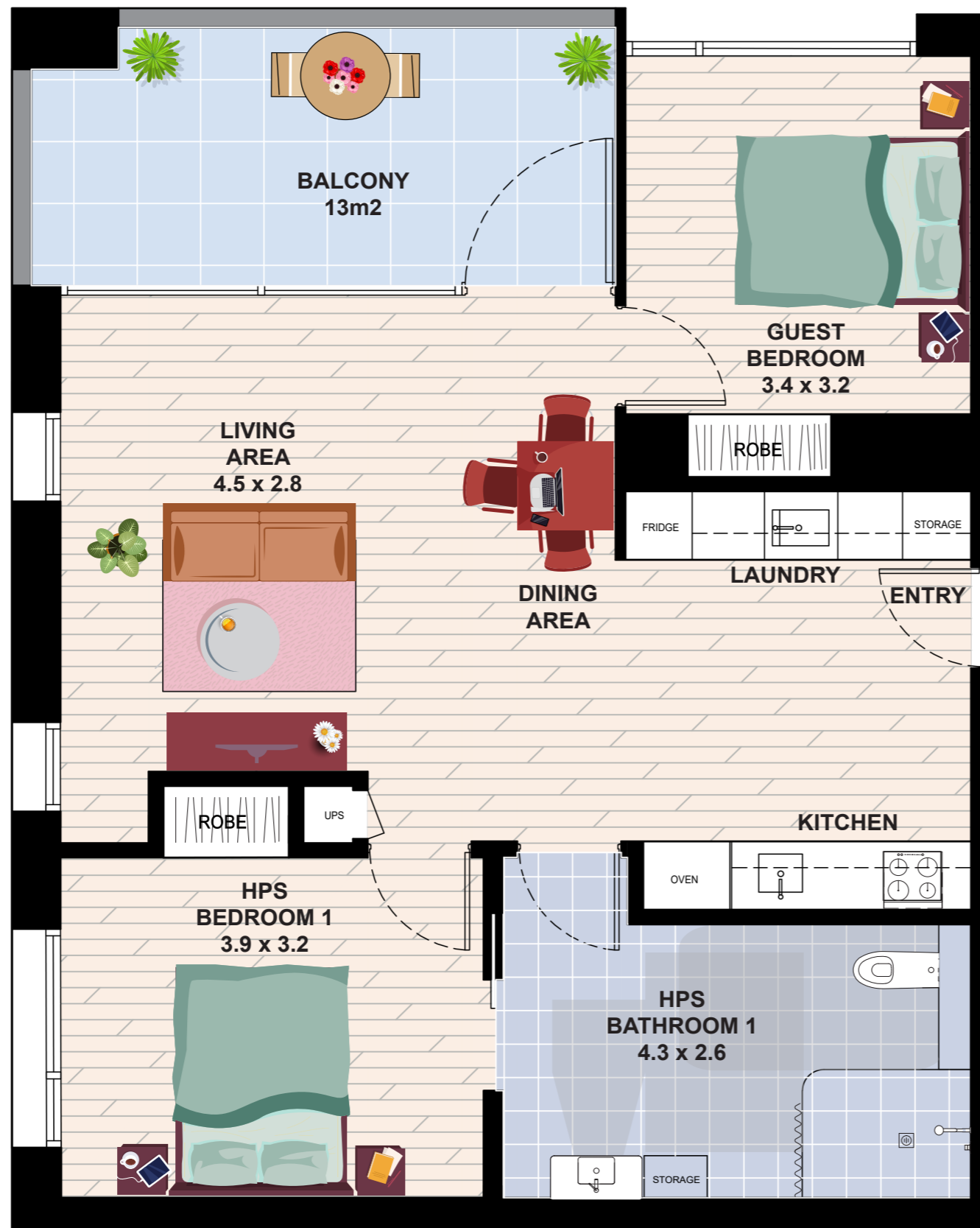
LITTLE LANE
52 Adelaide Street
FREMANTLE WA 6160

TYPE 03

Internal Area 81 m²

External Area 13 m²

TOTAL AREA 94 m²



NOTE: DESIGNS SUBJECT TO CHANGE



**IMPROVED
LIVEABILITY**



**FULLY
ACCESSIBLE**



**HIGH PHYSICAL
SUPPORT**

enliven HOUSING

Enquiries 1300 ENLIVEN
enlivenhousing.com.au