

EMPRESS
7 Windsor Terrace
WILLIAMSTOWN VIC 3016

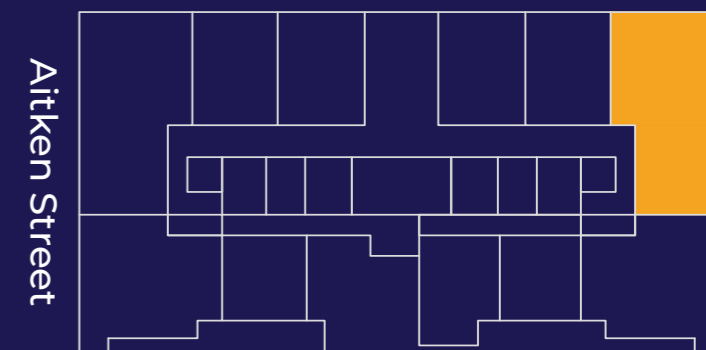
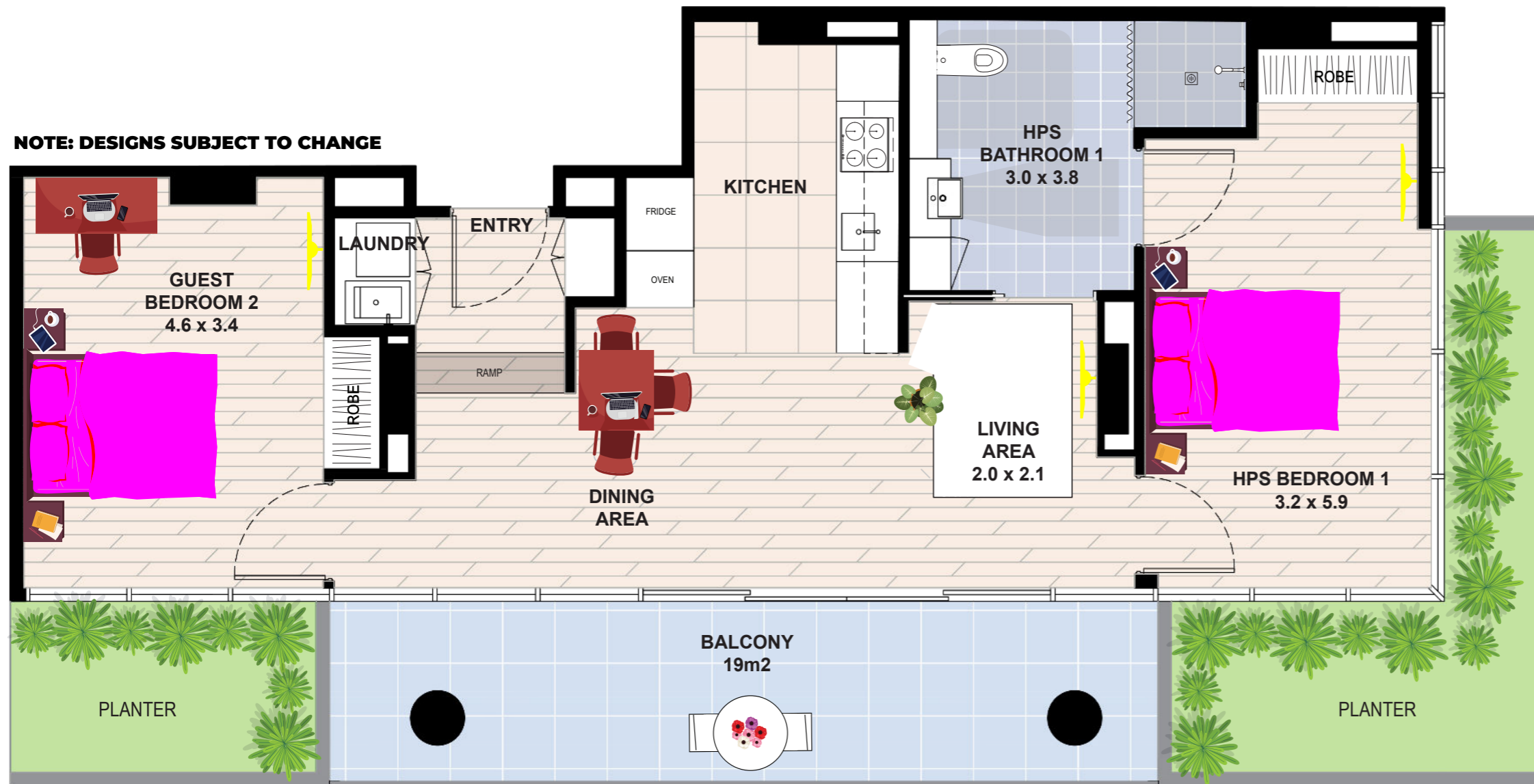
TYPE 04

Internal Area 92 m²

External Area 19 m²

TOTAL AREA 111 m²

NOTE: DESIGNS SUBJECT TO CHANGE



IMPROVED LIVEABILITY



FULLY ACCESSIBLE



HIGH PHYSICAL SUPPORT



enliven HOUSING

Enquiries 1300 ENLIVEN
enlivenhousing.com.au