

CIRCA THREE
29 Station Street
NUNDAH QLD 4012

TYPE 03

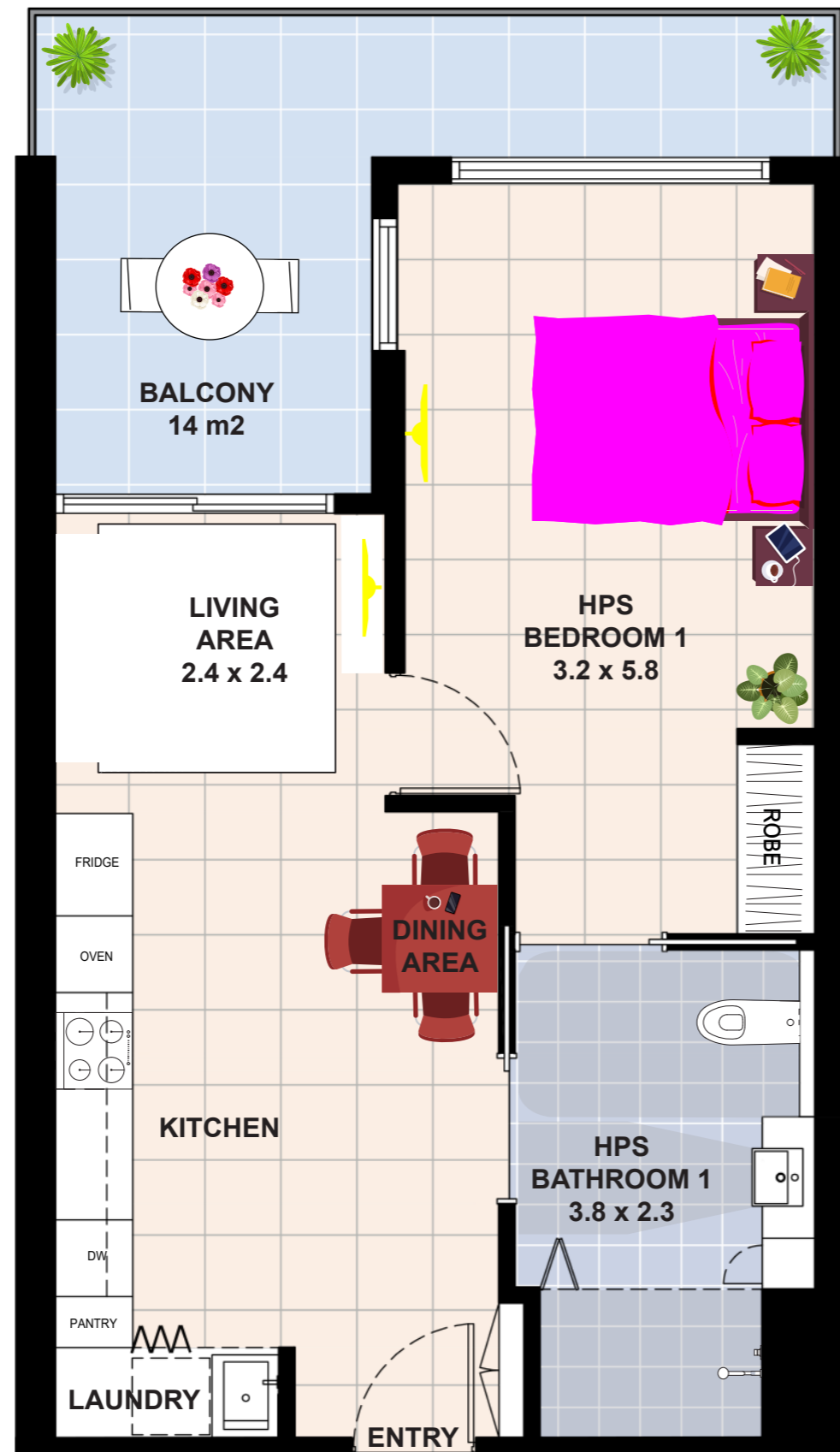
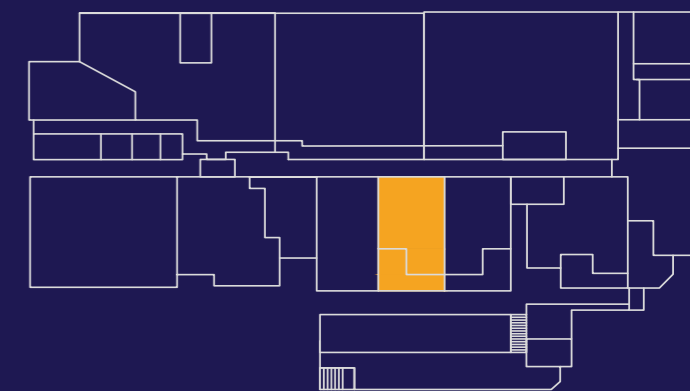
Internal Area 74 m²

External Area 17 m²

TOTAL AREA 91 m²



Station Street



NOTE: DESIGNS SUBJECT TO CHANGE



**IMPROVED
LIVEABILITY**



**FULLY
ACCESSIBLE**



**HIGH PHYSICAL
SUPPORT**

enliven HOUSING

Enquiries 1300 ENLIVEN
enlivenhousing.com.au