



**Windsor, VIC**  
*105 Punt Road*

enliven<sup>HOUSING</sup>

---

**Enquiries 1300 ENLIVEN**

*enlivenhousing.com.au*



## CV Windsor

CV Windsor apartments are designed to be elegant, modern and practical. The design makes exceptional use of space, and every apartment boasts enviable aspects, with windows facing either north or south. The addition of accessible terraces or winter gardens provides outdoor space with room for a personal garden improving the privacy of residents while maximising the views. Each residence in CV Windsor is unique, providing spacious seven two-bedroom and three one-bedroom SDA apartments in this boutique development.

Special features include a rooftop garden with zero maintenance where residents may host barbecues or relax with family and friends. Residents enter the building into a luxe ground floor and enjoy the exclusive-feel resident's lounge, complete with shared kitchen and dining area. Up to the first floor and you'll find the library, featuring a hot desk workstation with meeting rooms.

CV Windsor is just 5kms from the city centre, nestled between the historic suburbs of South Yarra, Prahran and St Kilda. CV Windsor is well located, close to a major hospital district, prestigious private schools and wealth of recreational facilities.

Step out of the apartment and find easy access to Prahran Railway Station or tram #6 on nearby High Street. You'll live just a short walk from Prahran Market, Prahran Grocer and major supermarkets on Chapel Street. Get away from it all at one of the areas many green spaces, such as the luscious Fawkner Park, Albert Park or Royal Melbourne Tennis Club and enjoy weekends strolling through St Kilda Botanical Gardens or along St Kilda beach.

Enliven Housing brings to market ten high quality apartments peppered throughout this stylish residential development. Enliven Housing will support NDIS funded, Improved Liveability, Fully Accessible and High Physical Support categories in CV Windsor.

## Features

- A tenant-controlled choice collective to support the engagement and management of agreed shared support arrangements.
- On-site support 24/7 may be available based on the choice collective needs.
- Blended support model supporting Improved Liveability, Fully Accessible and High Physical Support tenants.
- Generous sized apartments with internal laundry and ample storage.
- A mix of 1 & 2-bedroom units with parking.
- Provisioned for state-of-the-art assistive technology.
- Customised to meet your personalised needs, as defined by your OT.
- Structural provision for the installation of hoists if necessary.
- Fully accessible bathroom, bedrooms, kitchen and terrace areas.
- Pet Friendly.

# Available Apartments



**Type 01** 1  1 

## FEATURES

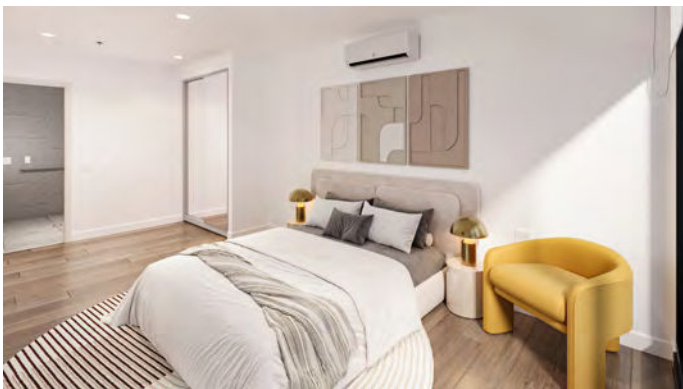
- Generous proportions, 60m<sup>2</sup> of internal space with an additional 14m<sup>2</sup> terrace
- Engineered timber flooring, stone bench tops with floor to ceiling windows
- Combo washer dyers
- Full Assistive Technology provisioned
- Fully accessible



**Type 02** 2  2  1 

## FEATURES

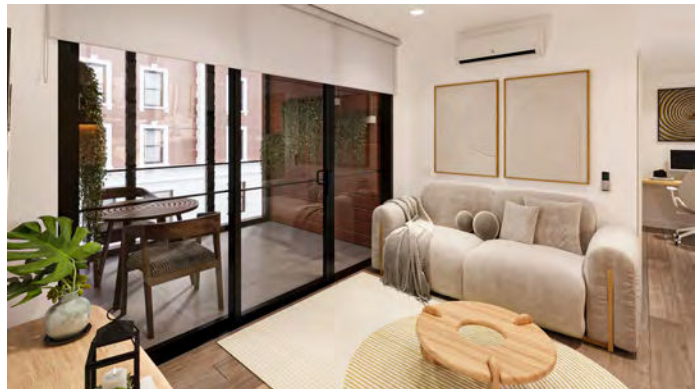
- Generous proportions, 80m<sup>2</sup> of internal space with an additional 9m<sup>2</sup> terrace
- Engineered timber flooring, stone bench tops with floor to ceiling windows
- Combo washer dyers
- Full Assistive Technology provisioned
- Fully accessible



**Type 03** 2  2  1 

## FEATURES

- Generous proportions, 71m<sup>2</sup> of internal space with an additional 8m<sup>2</sup> terrace
- Engineered timber flooring, stone bench tops with floor to ceiling windows
- Combo washer dyers
- Full Assistive Technology provisioned
- Fully accessible

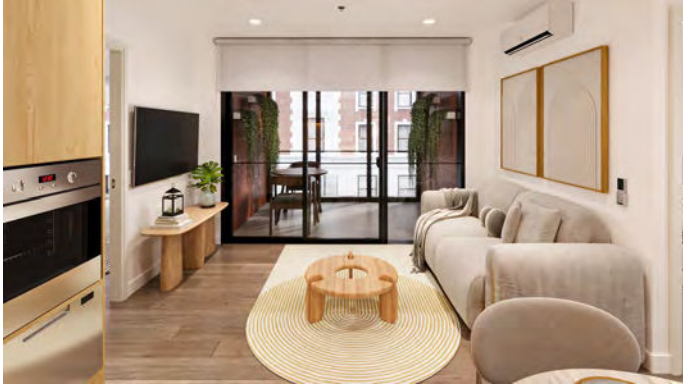


**Type 04** 2  2  1 

## FEATURES

- Generous proportions, 78m<sup>2</sup> of internal space with an additional 15m<sup>2</sup> terrace
- Engineered timber flooring, stone bench tops with floor to ceiling windows
- Combo washer dyers
- Full Assistive Technology provisioned
- Fully accessible

# Available Apartments



**Type 05** 2  2  1 

## FEATURES

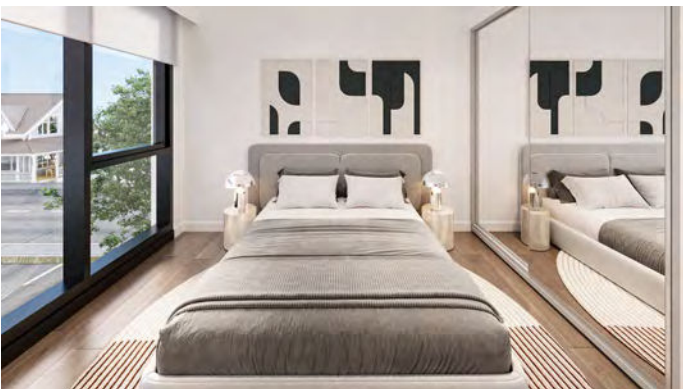
- Generous proportions, 76m<sup>2</sup> of internal space with an additional 12m<sup>2</sup> terrace
- Engineered timber flooring, stone bench tops with floor to ceiling windows
- Combo washer dyers
- Full Assistive Technology provisioned
- Fully accessible



**Type 06** 2  2  1 

## FEATURES

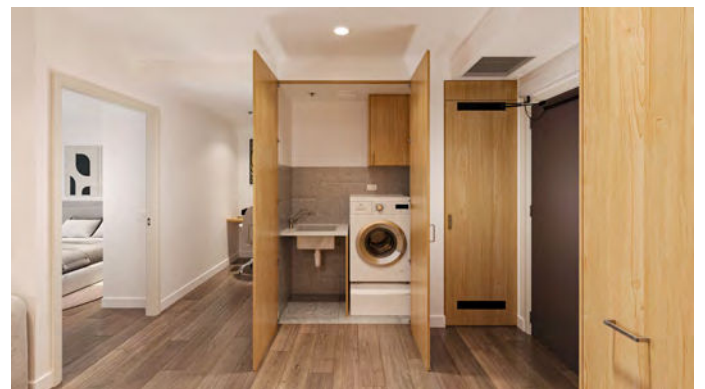
- Generous proportions, 74m<sup>2</sup> of internal space with an additional 14m<sup>2</sup> terrace
- Engineered timber flooring, stone bench tops with floor to ceiling windows
- Combo washer dyers
- Full Assistive Technology provisioned
- Fully accessible



**Type 07** 2  2  1 

## FEATURES

- Generous proportions, 75m<sup>2</sup> of internal space with an additional 17m<sup>2</sup> terrace
- Engineered timber flooring, stone bench tops with floor to ceiling windows
- Combo washer dyers
- Full Assistive Technology provisioned
- Fully accessible



**Type 08** 2  1  1 

## FEATURES

- Generous proportions, 70m<sup>2</sup> of internal space with an additional 8m<sup>2</sup> terrace
- Engineered timber flooring, stone bench tops with floor to ceiling windows
- Combo washer dyers
- Full Assistive Technology provisioned
- Fully accessible